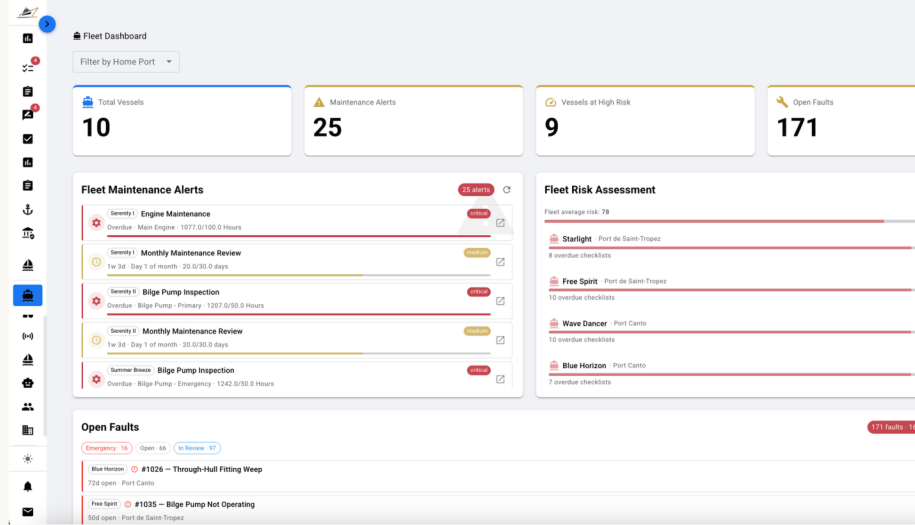




Uncover risk before it hits your bottom line.

ZeaFarer provides one clear view of fleet health, giving fleet managers the tools to address risk before it impacts your operation.



One Source of Truth

Centralize communications, maintenance programs, issue tracking, and more into a single platform that is accessible to everyone in your organization.



Role-Based Views

Tailored views allow users to jump into tasks quickly. Captain and crew views focus on simplicity and speed. Management views provide in-depth insights.



Live + Historical Insights

Get real time and historical insight into work completed and outstanding on every piece of equipment across all vessels.

Integration-Friendly

Already using other software? We can integrate other tech into our dashboard, so you don't have to switch between platforms to get a comprehensive view of your fleet's health.

Easy Implementation

We take responsibility for setting up your instance, so the system is ready for you to start as soon as you log in. We offer on-site quarterly training as needed for support.

AI Capabilities

Pair ZeaFarer with common AI tools like ChatGPT or Claude to get immediate, secure support. Troubleshoot issues in real time with AI that knows your fleet's equipment and history.



Stress-Free Installation

White-glove configuration in 2 days or less

Step 1:

The ZeaFarer team builds your **digital equipment library** by loading equipment makes, models, serial numbers, warranties, and manuals into our system.

Step 2:

We install a NMEA device onboard to power dashboards with **live and historical equipment performance data**, such as engine RPM, temperature, pressure, etc.

Step 3:

We train captains and crew to easily complete maintenance tasks and log issues with **optional AI troubleshooting** from their smartphones.

Step 4:

You're ready to launch! We'll be by your side with 24/7 support and quarterly onsite training to ensure total satisfaction.